

# PMSR 2024



## *Denný briefing 1*

# 23.06.2024



# Prvé PMEMESR 2024



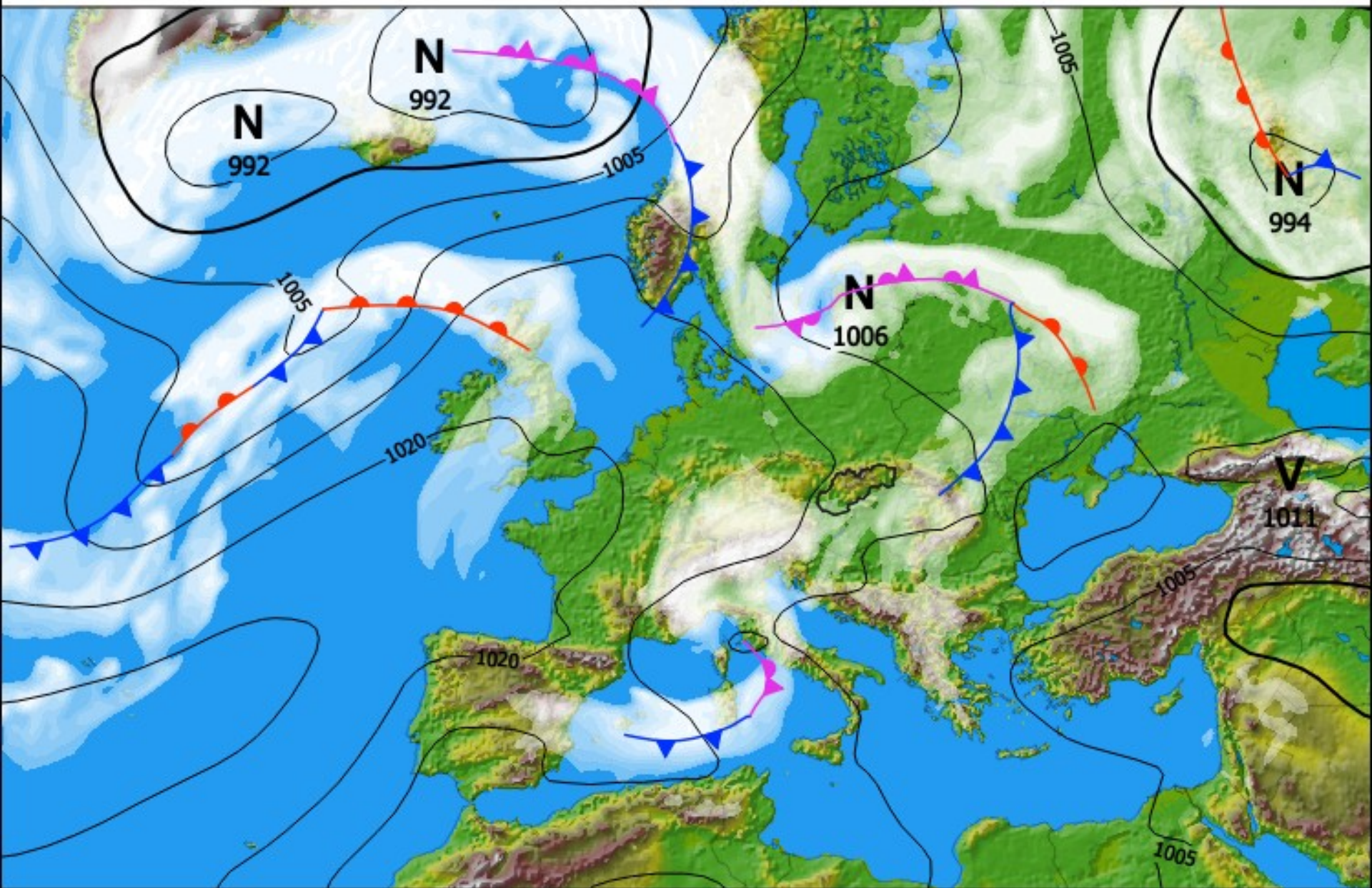
## Vítaz

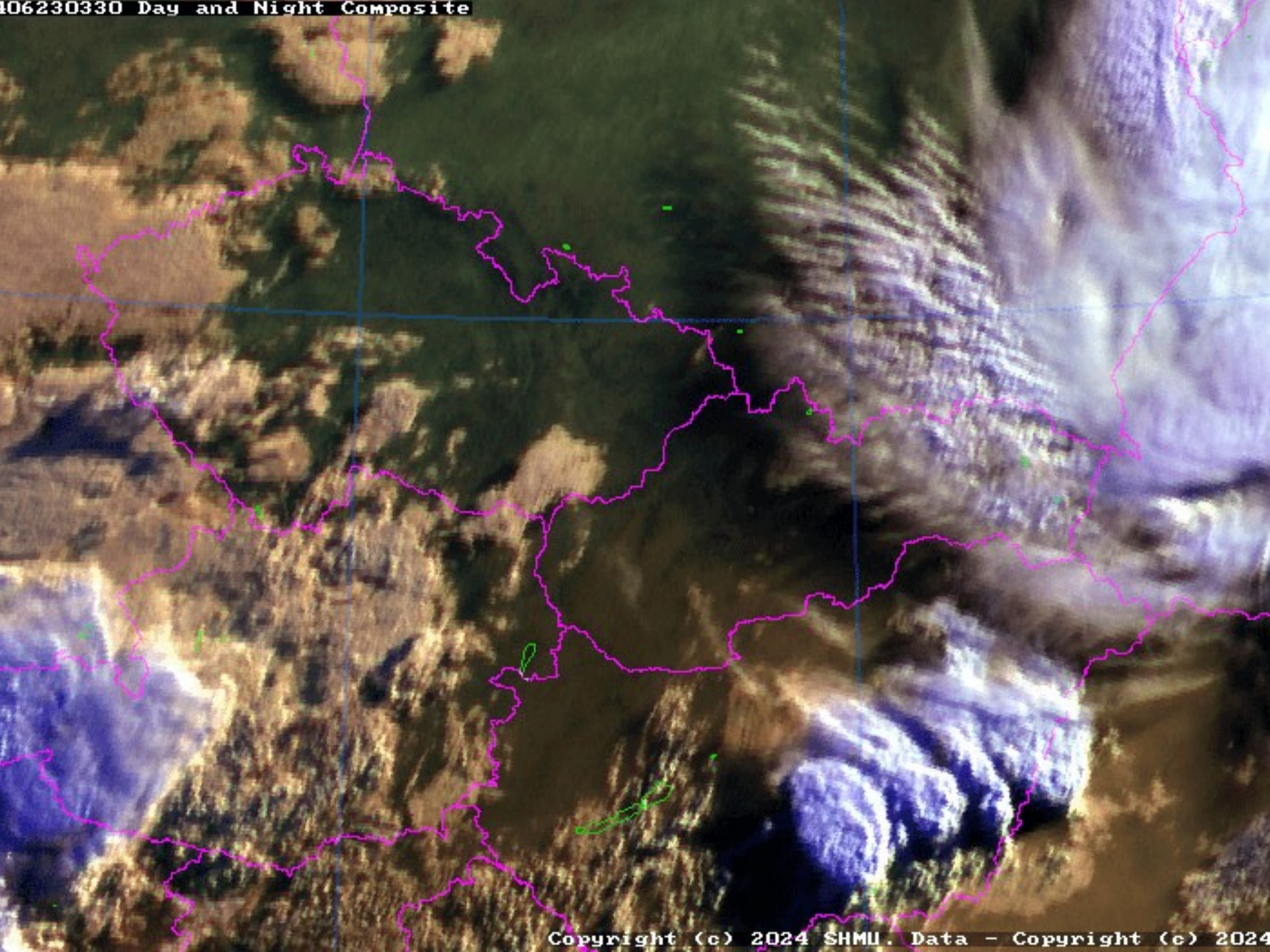
Klubová trieda

1. Tibor Frátrik  
WS Krájač

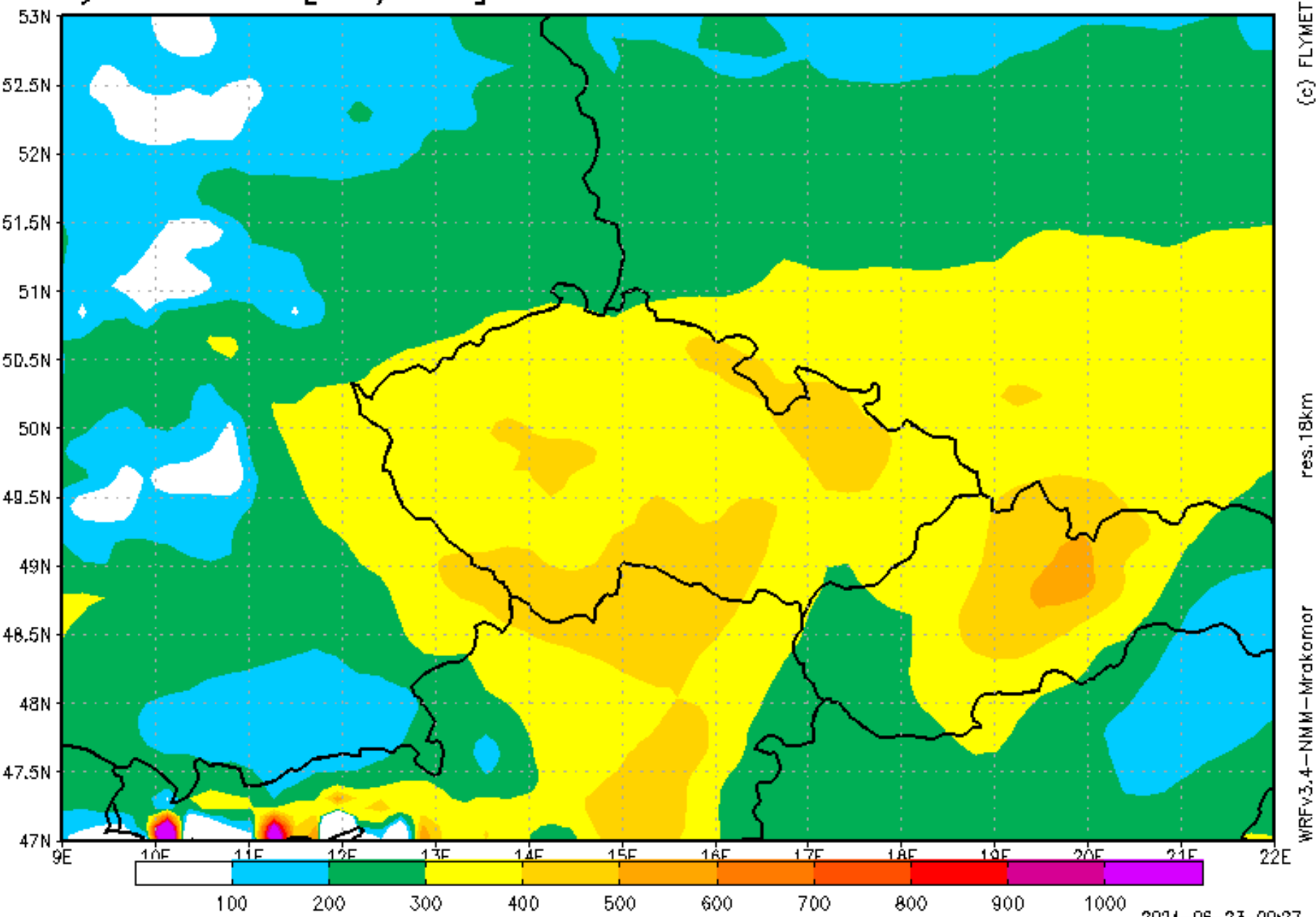


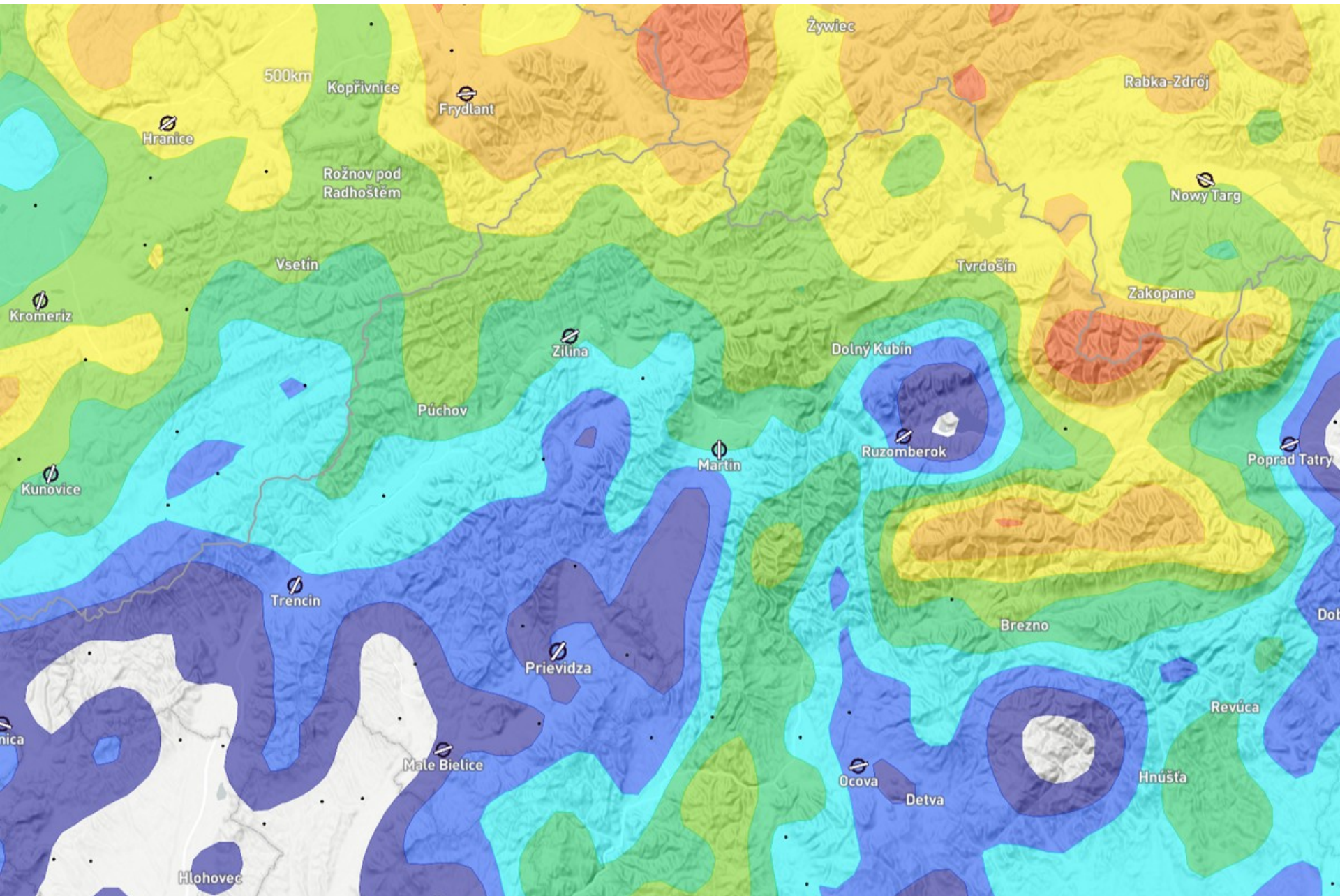
© SHMÚ - Prízemné tlakové pole - nedeľa 23.06.2024 12:00 UTC



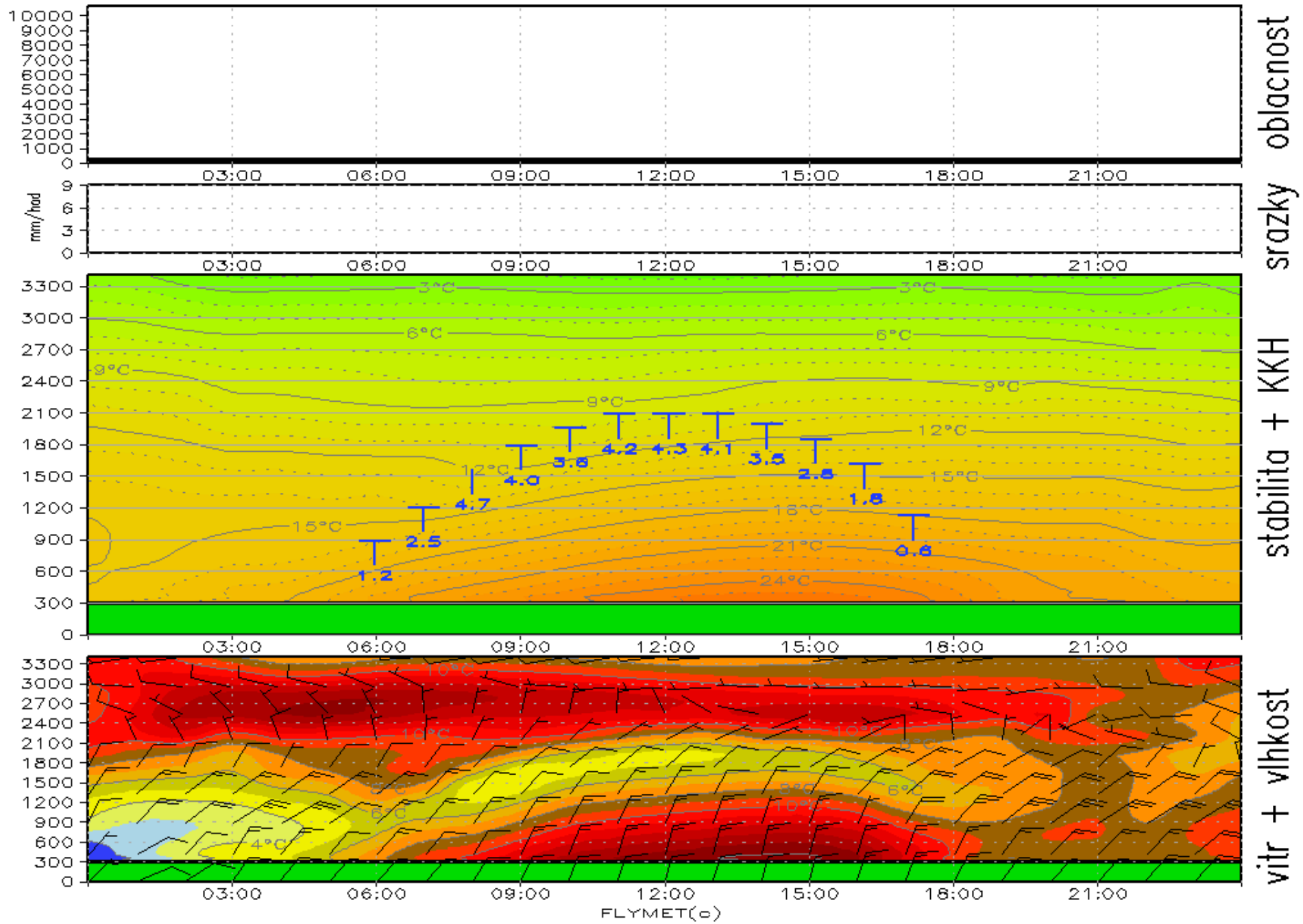


# Vyuzitelnost [km/den] 9:00–16:59 UTC nedele 23. 06. 2024

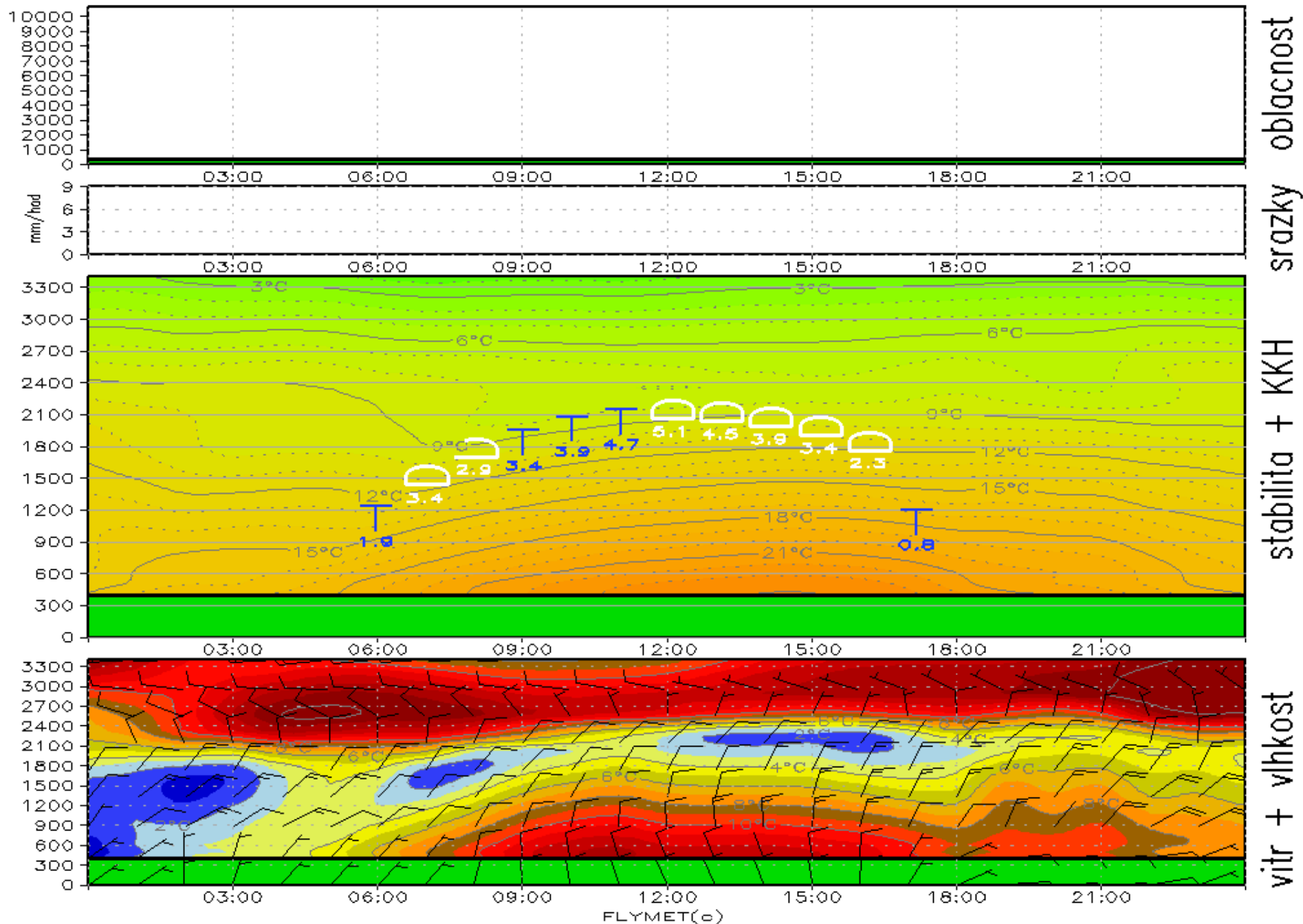




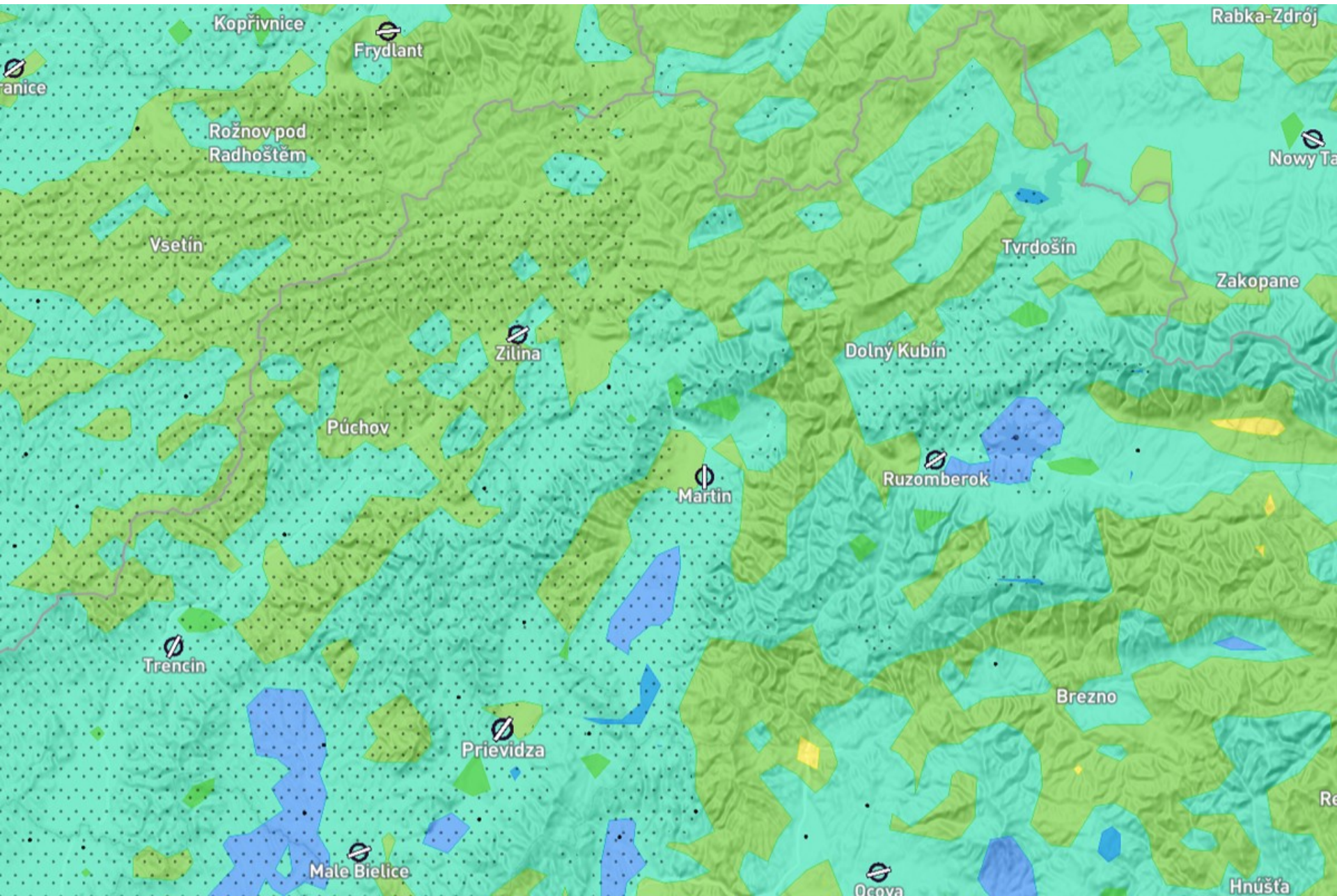
# Meteogram PŘEVIDZA na nedele 23.06.2024



# Meteogram MARTIN na nedele 23.06.2024



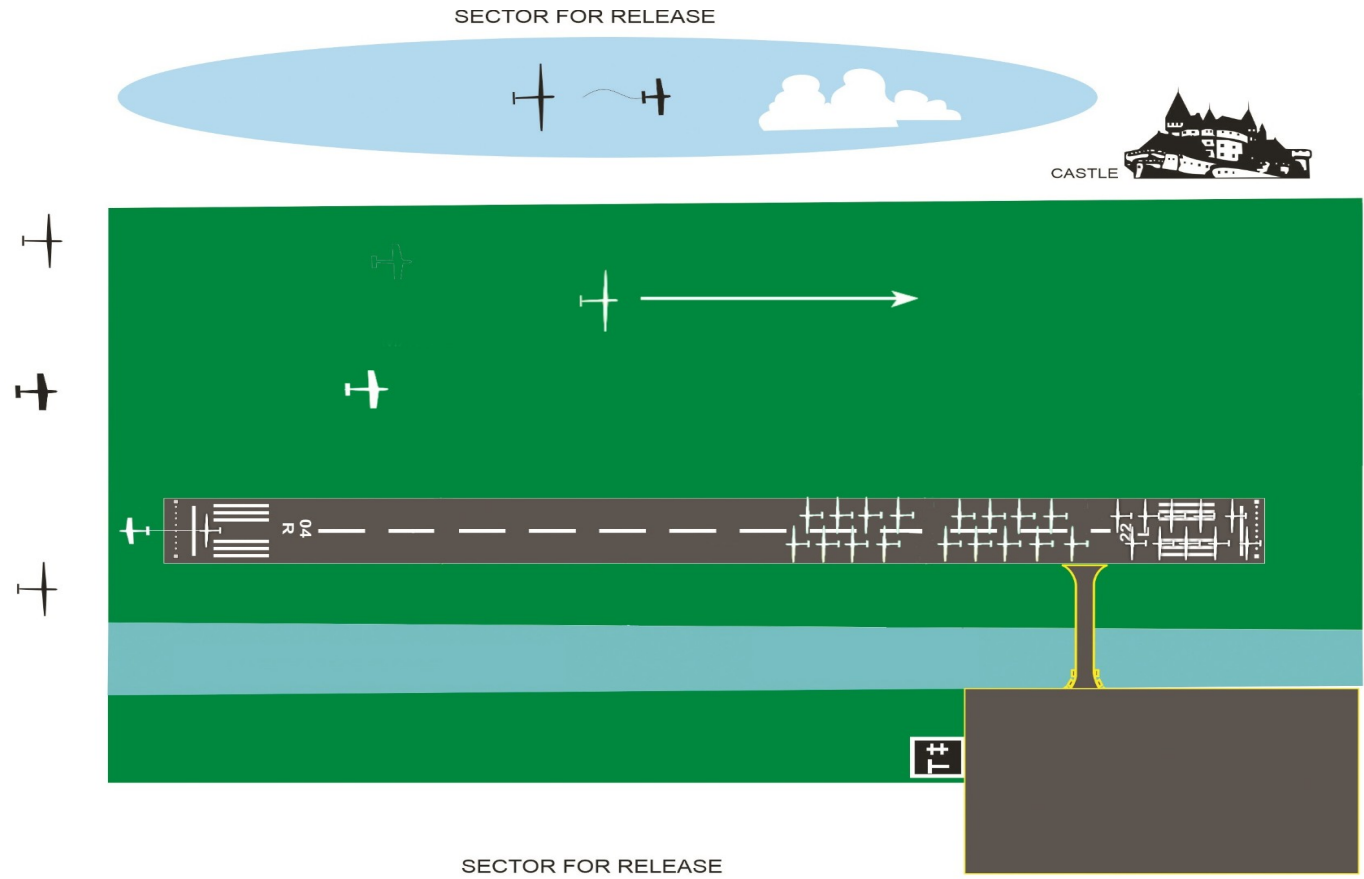




# Safety briefing

## A. Take-off from the runway 22

### Alternative A – Southern wind up to 10kt



LAUNCHING  
AND AIR TOW  
PROCEDURES  
FOR RUNWAY  
**22**  
Landing for Re-Launch  
**04**



# Klubová trieda



AAT 161.40 – 355.82km

Čas úlohy: 3:00:00

- **Páska 15km**

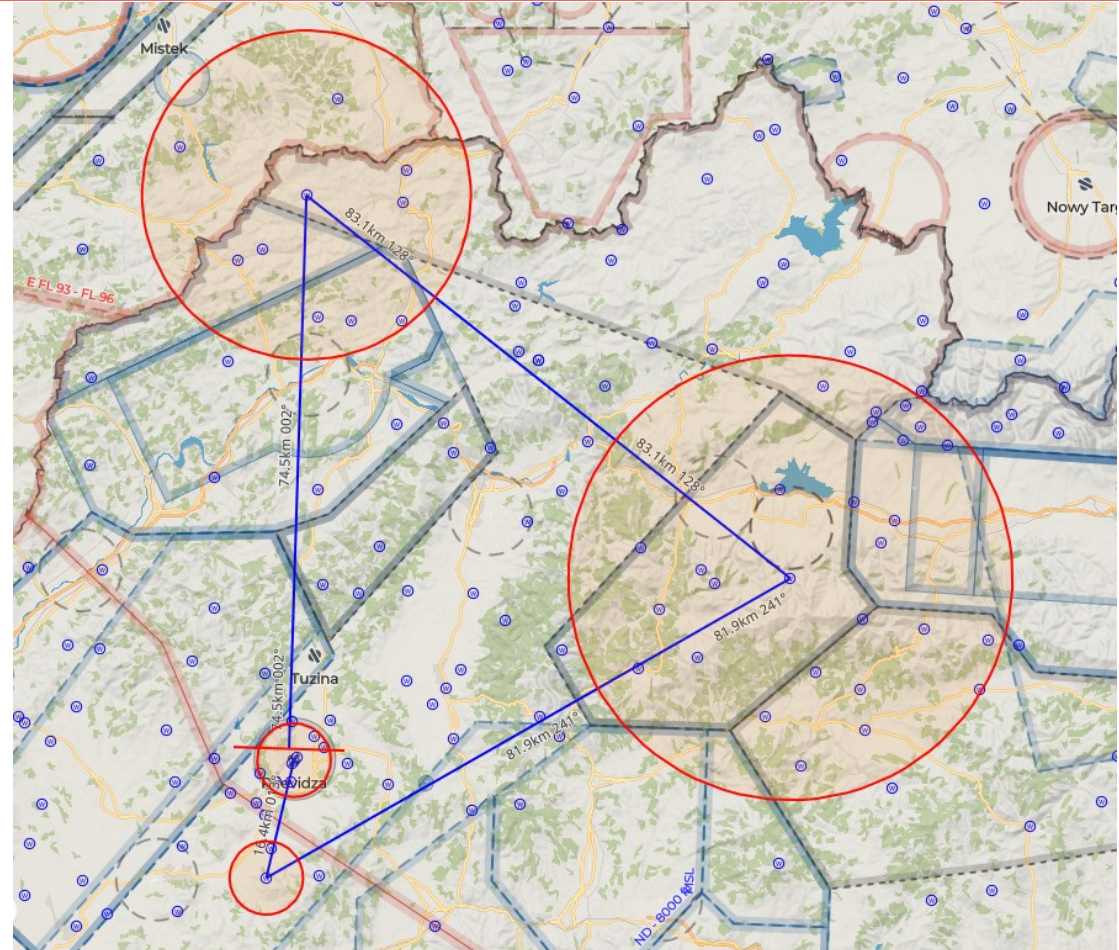
004 BOJNICE

235 TURZOVKA

217 DUBRAVA

508 VTAC UP

001 PRIEVIDZA



# Kombi



AAT 183.11 – 406.85km

Čas úlohy: 3:00:00

- **Páska 15km**

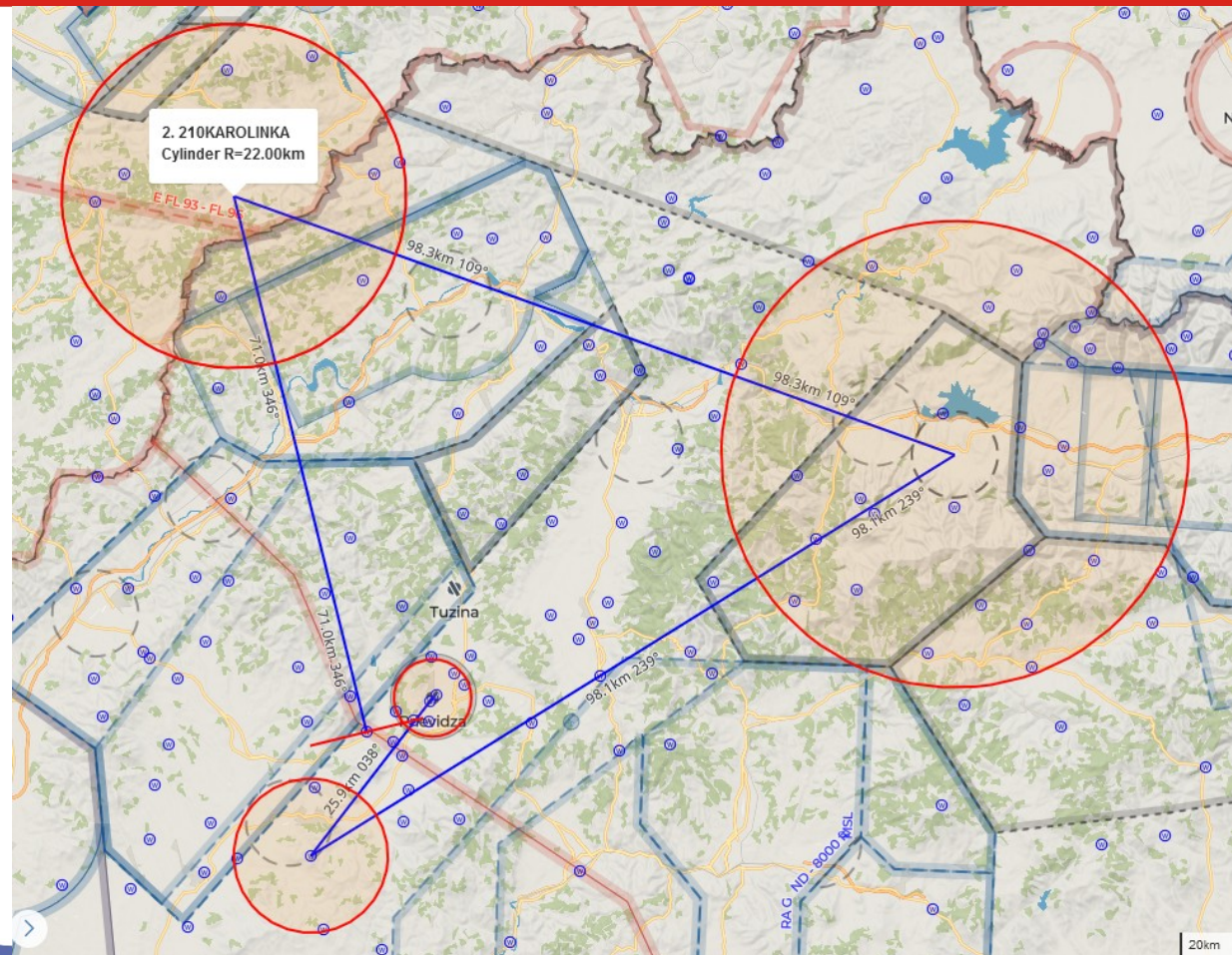
016 NITR SUCANY

210 KAROLINKA

228 LZJS

054 VELKY KLIZ

001 PRIEVIDZA



# Informácie



**MAX. Výška:** Czech Republic FL095 (except controlled areas). Poland FL095 (except controlled areas), Beskydy, Liptov, Chopok 9500 ft AMSL

**PERMANENTNE ZAK. PRIESTORY:** LZP1 MOCHOVCE, LZP29 Jaslovské Bohunice, LZP23 Sala, Tatry CTR, Poprad TMA 1,2,3,4, Bratislava TMA 1, 2, 4, LZR10 Rutol, LZR225, ,LZR225A,B,C; BA CTA EAST-GLD, Bratislava CTA Sector West

**ZAK. PRIESTORY DNES:** LZR24 Lest, LZR60A,B,C; LZTRA06 A,B,C; Piestany CTR, Piestany TMA 1, 2, TMA II Ostrava, Bratislava CTA sector EAST, Hungary

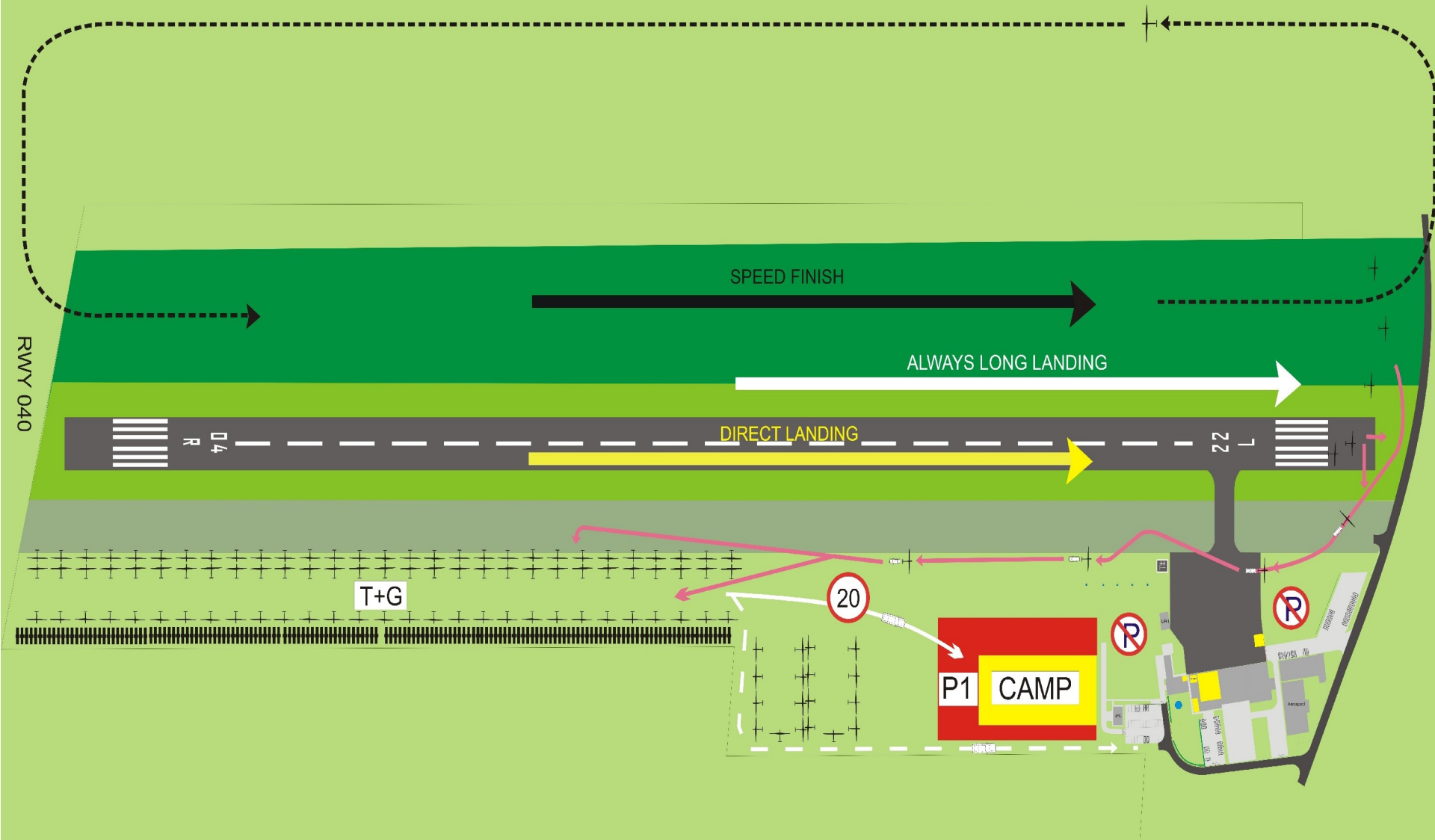
**WARNING:** Paradraps RMZ Dubnica LZDB(122,340) - 5 NM

**Outlanding:** text message: +421 908 706 340



# Arrivals 040 - approach from the south

Picture 4a.



# Štart



**Štart: 11:15**  
**PEV: 5/10**



# Príletový kruh



*Minimalna výška na príletovom kruhu*  
**460m AMSL**





# PMSR 2024



# Bezpečný let!

